

Product datasheet

Specifications



Soft starter, Altivar Soft Starter ATS430, 32A, 208 to 600V AC, control supply 110 to 230V AC

ATS430D32S6

Price: 16,401.19 ZAR

Main

Range of product	Altivar Soft Starter ATS430
Product or component type	Soft starter
Product destination	Asynchronous motors
Product specific application	Standard industrial machines
Device short name	ATS430
Network number of phases	3 phases
Utilisation category	AC-3A AC-53A
Ue power supply voltage	208...600 V AC (- 15...10 %)
power supply frequency	50...60 Hz - 20...20 %
[Ie] rated operational current	Normal duty: 32 A in line (at <40 °C)
Service factor at Ie	100
IP degree of protection	IP20
Motor power kW	7.5 kW at 230 V in line normal duty 15 kW at 400 V in line normal duty 15 kW at 440 V in line normal duty 18.5 kW at 500 V in line normal duty 18.5 kW at 525 V in line normal duty
Motor power hp	7.5 hp at 208 V normal duty 10 hp at 230 V normal duty 20 hp at 460 V normal duty 25 hp at 575 V normal duty
Communication port protocol	Modbus serial

Complementary

Device connection	In line
Overload current	400 % Ie for 13 s
On-load factor	50 %
Operating cycles/hour	10 cyc/h
[Us] control circuit voltage	110...230 V AC 50...60 Hz - 15...10 %
Apparent power	70 VA
Integrated motor overload protection	True
motor thermal protection class	Class 10E

Excluding VAT and subject to change. Please check with your local distributor through "Where to buy"

Protection type	Phase failure: mains Thermal protection: mains Thermal protection: starter Current overload: motor Motor underload: motor Excessive acceleration time: motor Motor phase loss detection: motor Protection against line phase inversion: mains External thermal protection: motor Short-circuit between motor phase and earth: motor
current limiting %In (5 x Ie maximum)	150...700 %
Rated current pwr loss specification	32 A
Power loss static current independent	19 W
Power loss per device current dependent	6 W
Power loss during starting	281 W during starting at 40 °C at 400% In
Standards	EN/IEC 60947-4-2 UL 60947-4-2 IEC 60664-1
Product certifications	cULus CE UKCA CCC RCM EAC KC
Marking	CULus CE UKCA CCC RCM EAC KC
[Uc] control circuit voltage	24 V DC
Discrete input number	4
Discrete input type	(STOP) digital input, 4.4 kOhm (RUN) digital input, 4.4 kOhm (DI3) digital input, 4.4 kOhm (DI4) digital input, 4.4 kOhm
Input compatibility	STOP: digital input level 1 PLC conforming to EN/IEC 61131-2 RUN: digital input level 1 PLC conforming to EN/IEC 61131-2 DI3: digital input level 1 PLC conforming to EN/IEC 61131-2 DI4: digital input level 1 PLC conforming to EN/IEC 61131-2
Discrete input logic	Digital input STOP at State 0: 0...< 5 V and <= 2 mA at State 1: > 11 V, >= 5 mA Digital input RUN at State 0: 0...< 5 V and <= 2 mA at State 1: > 11 V, >= 5 mA Digital input DI3 at State 0: 0...< 5 V and <= 2 mA at State 1: > 11 V, >= 5 mA Digital input DI4 at State 0: 0...< 5 V and <= 2 mA at State 1: > 11 V, >= 5 mA
Relay output number	2
Relay output type	Relay outputs R1A, R1C NO Relay outputs R1B, R1C NC Relay outputs R2A, R2C NO
Minimum switching current	100 mA at 12 V DC for relay outputs
Maximum switching current	Relay outputs 2 A / 250 V AC for AC-15 100000 cycles following IEC 60947-5-1 Relay outputs 2 A / 30 V DC for DC-13 150000 cycles following IEC 60947-5-1
Analogue input number	1
Analogue input type	PTC1 : PTC temperature probe PTC2 : PTC temperature probe
Analogue output number	1

Analogue output type	Current output AQ1 : 0...20 mA/4...20 mA , impedance< 500 Ohm Voltage output AQ1 : 0...10 V , impedance> 470 Ohm
Communication port protocol	Modbus serial RJ45 Modbus serial open style (DO, D1, PE, COM)
Connector type	1 RJ45 Open style
Physical interface	2-wire RS 485 - connector(s): RJ45 2-wire RS 485 - connector(s): open style (DO, D1, PE, COM)
Transmission frame	RTU : 1 RJ45 RTU : open style (DO, D1, PE, COM)
Transmission rate	4.8...38.4 kbps for Modbus serial RJ45 0.3...115.2 kbps for Modbus serial open style (DO, D1, PE, COM)
Data format	8 bits, odd, even or no parity, 1 or 2 bits to stop for Modbus serial RJ45 8 bits, configurable odd, even or no parity for Modbus serial open style (DO, D1, PE, COM)
Number of addresses	0...247 for Modbus serial
Method of access	Slave Modbus serial
Type of polarization	No impedance for Modbus serial
Display screen available	True
Operating position	Vertical +/- 10 degree
Height	273 mm
Width	130 mm
Depth	169 mm
Net weight	2.90 kg
internal bypass	True
Function available	Single direction Pre-heating Power monitoring Condition monitoring User management Ports and services hardening Security event logging Cybersecure firmware update Small motor test
material declaration	True

Environment

Electromagnetic compatibility	Conducted and radiated emissions level A conforming to IEC 60947-4-2 Electrostatic discharge level 3 conforming to IEC 61000-4-2 Immunity to radiated radio-electrical interference level 3 conforming to IEC 61000-4-3 Immunity to electrical transients level 4 conforming to IEC 61000-4-4 Voltage/current impulse level 3 conforming to IEC 61000-4-5 Damped oscillating waves level 3 conforming to IEC 61000-4-18 Immunity to conducted disturbances radio-frequency level 3 conforming to IEC 61000-4-6
Pollution degree	Level 3
[Uimp] rated impulse withstand voltage	6 kV
[Ui] rated insulation voltage	600 V
Environmental class (during operation)	Class 3C3 according to IEC 60721-3-3 Class 3S3 according to IEC 60721-3-3
Ambient air temperature for operation	-25...40 °C (without derating) 40...60 °C (with current derating of 1 % per °C above 40 °C)
Ambient air temperature for storage	-40...70 °C

Ambient air transport temperature	-40...70 °C
Operating altitude	<= 2000 m without derating > 2000...4800 m with current derating 1 % per 100 m above 2000 m
Relative humidity	5...95 % without condensation or dripping water conforming to EN/IEC 60068-2-3
Maximum deflection under vibratory load (during operation)	1.5 mm at 2...13 Hz
Maximum deflection under vibratory load (during storage)	1.75 mm at 2...9 Hz
Maximum deflection under vibratory load (during transport)	1.75 mm at 2...9 Hz
Maximum acceleration under vibrational stress (during operation)	1 gn at 13...200 Hz
Maximum acceleration under vibratory load (during storage)	1 gn at 9...200 Hz 1.5 gn at 200...500 Hz
Maximum acceleration under vibratory load (during transport)	1 gn at 9...200 Hz 1.5 gn at 200...500 Hz
Maximum acceleration under shock impact (during operation)	15 gn at 11 ms
Maximum acceleration under shock load (during storage)	10 gn at 11 ms
Maximum acceleration under shock load (during transport)	10 gn at 11 ms

Packing Units

Unit Type of Package 1	PCE
Number of Units in Package 1	1
Package 1 Height	34.5 cm
Package 1 Width	24 cm
Package 1 Length	22 cm
Package 1 Weight	3.12 kg
Unit Type of Package 2	S06
Number of Units in Package 2	10
Package 2 Height	73 cm
Package 2 Width	60 cm
Package 2 Length	80 cm
Package 2 Weight	44.2 kg

Contractual warranty

Warranty (in months)	18
-----------------------------	----



Environmental Data

Schneider Electric aims to achieve Net Zero status by 2050 through supply chain partnerships, lower impact materials, and circularity via our ongoing “Use Better, Use Longer, Use Again” campaign to extend product lifetimes and recyclability.

[Environmental Data explained >](#)

[How we assess product sustainability >](#)

Environmental footprint

Total lifecycle Carbon footprint 2246

Environmental Disclosure [Product Environmental Profile](#)

Use Better

Materials and Substances

Packaging made with recycled cardboard No

Packaging without single use plastic No

[EU RoHS Directive](#) Compliant with Exemptions

SCIP Number 35cb7027-fb3d-4f72-a9b1-0ae265a3258f

REACH Regulation [REACH Declaration](#)

Use Longer

Lifetime extension

Repair No

Use Again

Repack and remanufacture

End of life manual availability [End of Life Information](#)

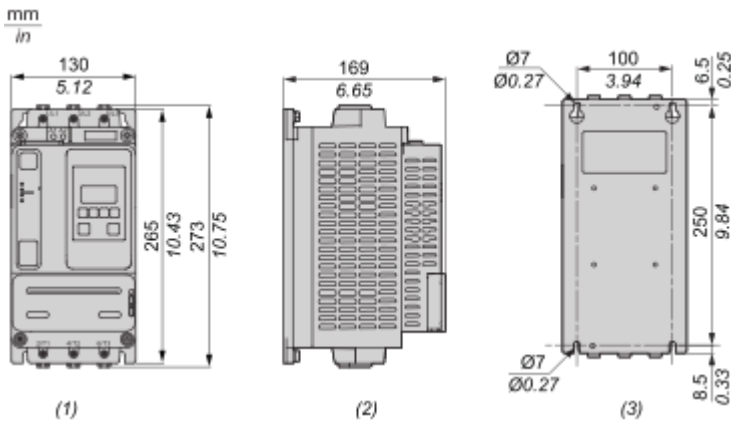
Removable battery Yes

Take-back No

WEEE Label The product must be disposed on European Union markets following specific waste collection and never end up in rubbish bins

Dimensions Drawings

Dimensions

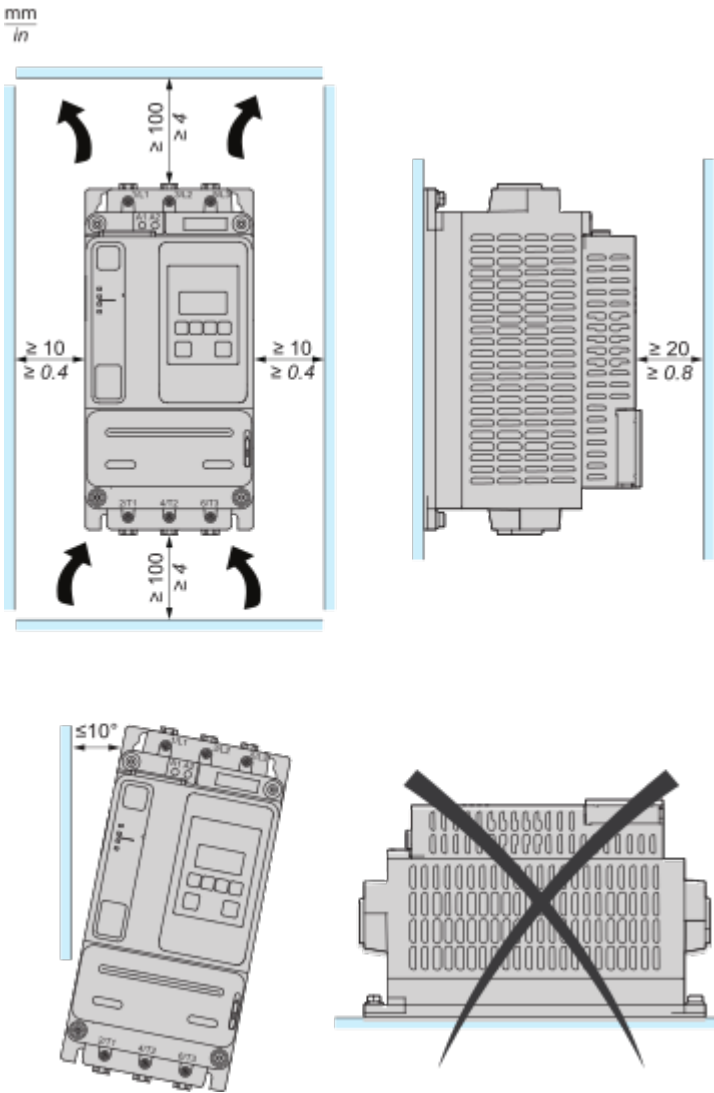


- (1) : Front
- (2) : Side
- (3) : Rear

Mounting and Clearance

Mounting Position

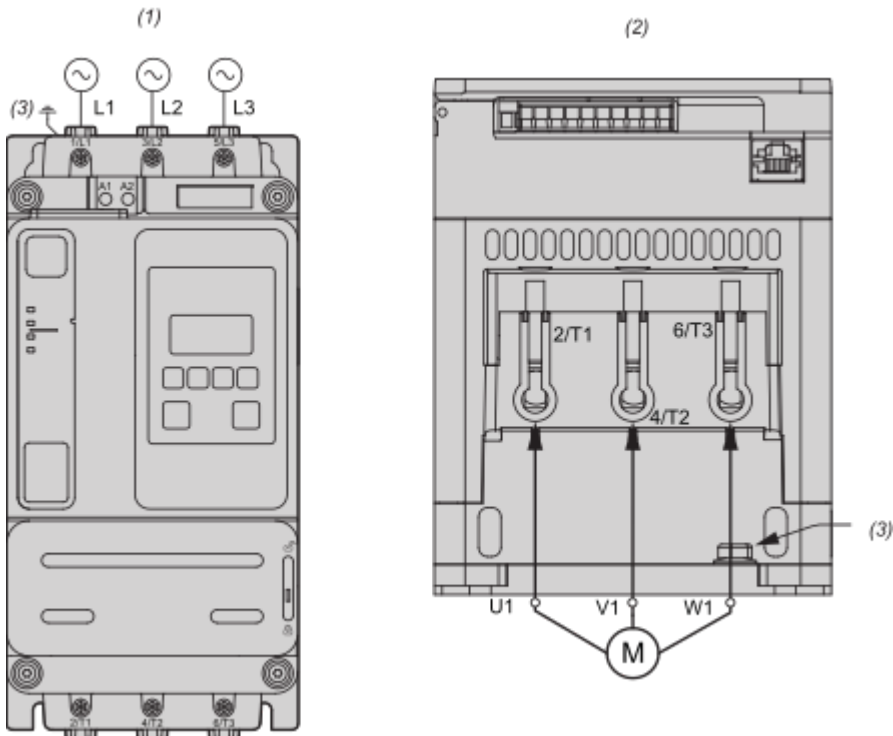
The soft starter is designed to be mounted inside cabinets vertically at $\pm 10^\circ$ for cooling purposes. Respect the minimum clearances so that the cooling air can circulate from the bottom to the top of the soft starter. The minimum clearances apply to any device close to the soft starter such as circuit breakers, fuses and contactors. Do not install the soft starter above heating elements.



Connections and Schema

Wiring

Wiring the Power Part



Use class C cables for the power connections.

1/L1, 3/L2, 5/L3 : Mains supply inputs

2/T1, 4/T2, 6/T3 : Outputs to motor

(1) : Mains side

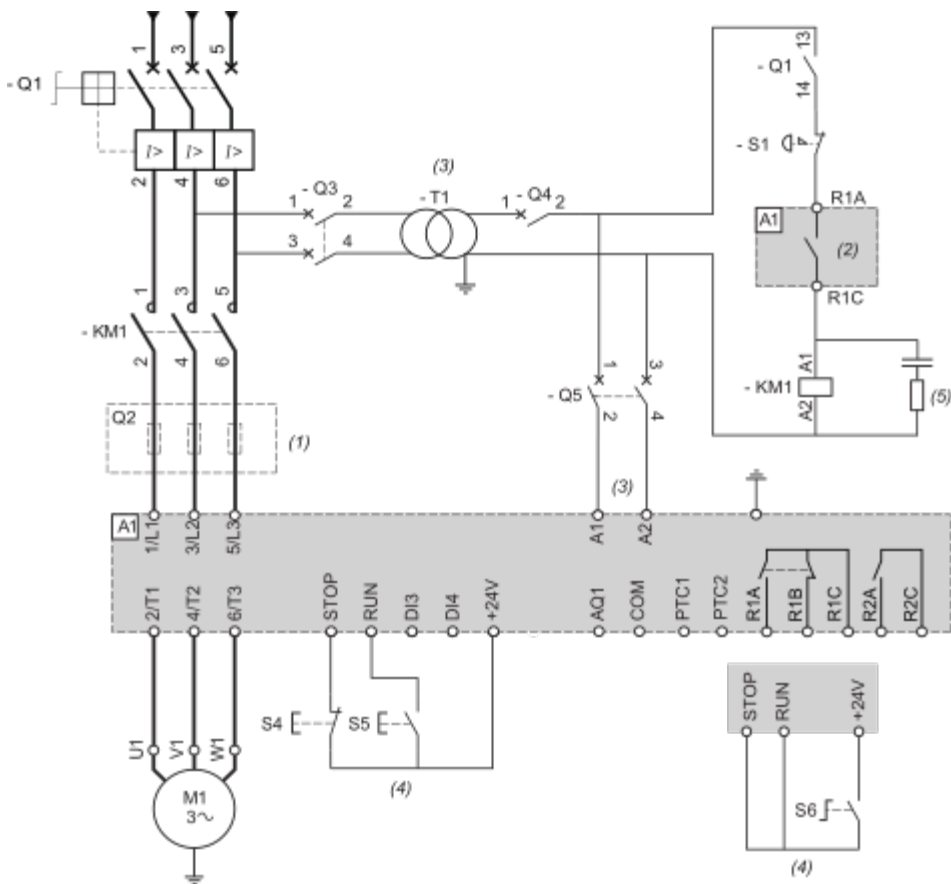
(2) : Motor side (bottom)

(3) : Ground connection

Connection In Line, With Line Contactor, Type 1 or 2 Coordination, 2-wire control or 3-wire control

Line contactor controlled based on RUN & STOP or on detected error.

Use relay output R1 set to [Mains Contactor]



- (1) : Installation of additional fast-acting fuses is mandatory to upgrade to type 2 coordination according to IEC 60947-4-2.
- (2) : Take into account the electrical characteristics of the relays.
- (3) : The transformer must supply 110...230 Vac -15%...+10%, 50/60Hz.
- (4) : 3-wire control or 2-wire control.
- (5) : Select the appropriate voltage surge suppressor.

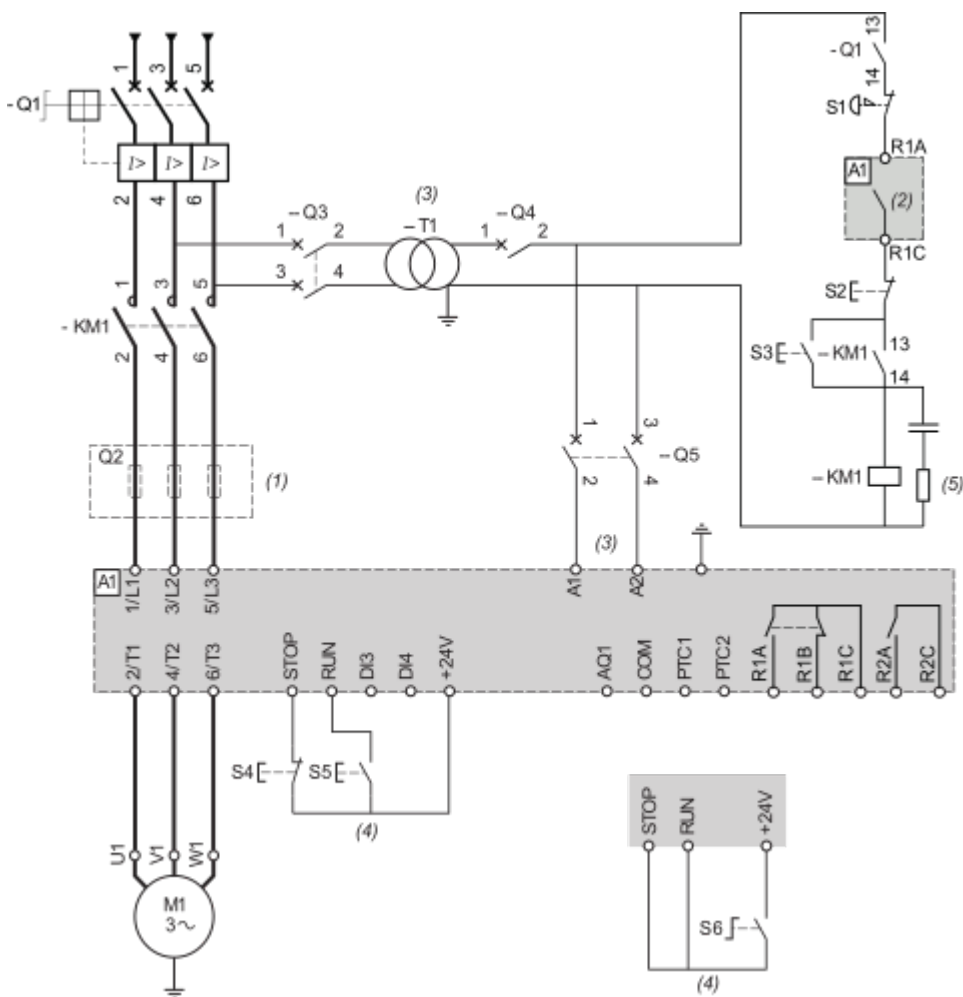
Designation	Component	Description
Q1	Circuit breaker	Short circuit protection device for the motor
Q2	Circuit breaker	Short circuit protection device for the primary of the transformer
Q3	Fast acting fuses	Short circuit protection device of the soft starter to be used only when type 2 coordination according to IEC 60947-4-2 is required
Q4	Circuit breaker	Short circuit protection device for the secondary of the transformer
Q5	Circuit breaker	Short circuit protection device for the control part of the soft starter
KM1	Contactor	Line contactor
S1	Emergency Stop push-button	Emergency Stop to de-energized KM1 line contactor
S4	Normally close contact push-button	STOP command for 3-wire control
S5	Normally open contact push-button	RUN command for 3-wire control

S6	Selector switch, 2 positions, stay-put, normally open contact	RUN/STOP. command for 2-wire control
----	---	--------------------------------------

Connection In Line, With Line Contactor, Type 1 or 2 Coordination, 2-wire or 3-wire

Line contactor controlled by Power ON and Power OFF push-buttons or detected error.

Use relay output R1 set to [Operating State Fault] (factory setting)

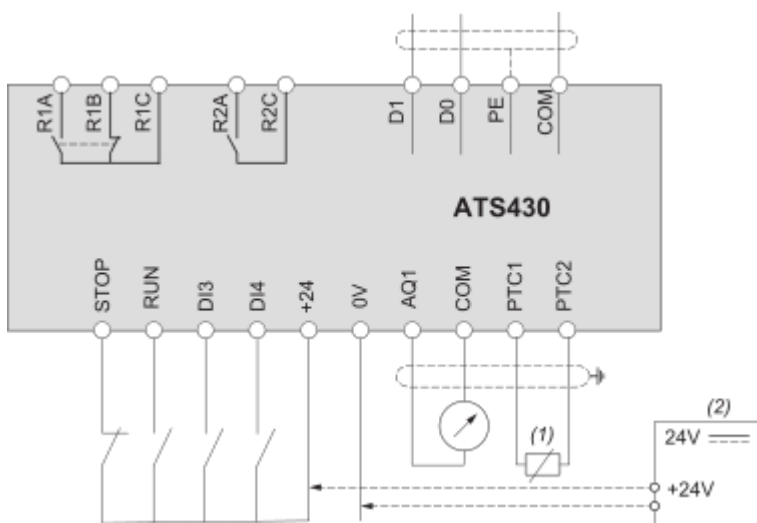


- (1) : Installation of additional fast-acting fuses is mandatory to upgrade to type 2 coordination according to IEC 60947-4-2.
- (2) : Take into account the electrical characteristics of the relays.
- (3) : The transformer must supply 110...230 Vac -15%...+10%, 50/60Hz.
- (4) : 3-wire control and 2-wire control.
- (5) : Select the appropriate voltage surge suppressor.

Designation	Component	Description
Q1	Circuit breaker	Short circuit protection device for the motor
Q2	Circuit breaker	Short circuit protection device for the primary of the transformer
Q3	Fast acting fuses	Short circuit protection device of the soft starter to be used only when type 2 coordination
Q4	Circuit breaker	Short circuit protection device for the secondary of the transformer

Q5	Circuit breaker	Short circuit protection device for the control part of the soft starter
KM1	Contactors	Line contactors
S1	Emergency Stop push-button	Emergency Stop to de-energized KM1 line contactors
S2	Normally close push-button	Power OFF
S3	Normally open push-button	Power ON
S4	Normally close contact push-button	STOP command for 3-wire control
S5	Normally open contact push-button	RUN command for 3-wire control
S6	Selector switch, 2 positions, stay-put, normally open contact	RUN/STOP command for 2-wire control

Control Block Wiring Diagram



R1A, R1B, R1C : Programmable relay R1

R2A, R2C : Relay assigned to End of starting

STOP, RUN, DI3, DI4 : Digital inputs

AQ1: Analogue output

PTC1, PTC2 : PTC connection

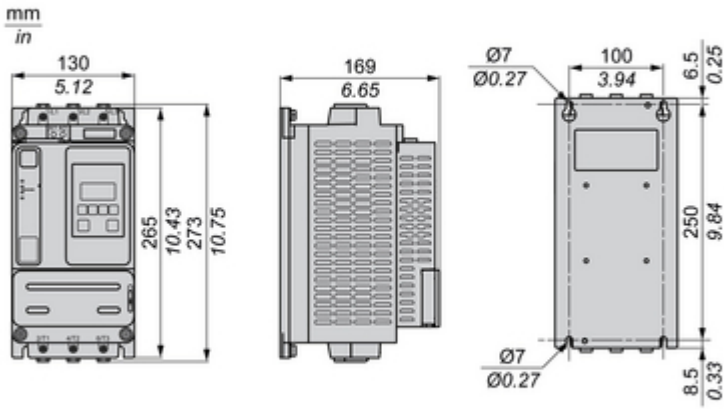
D0, D1 : Serial link based on 2-wire Modbus over serial line electrical interface

(1) : 2 wire PTC

(2) : Optional, in case of +24 External Supply usage

Technical Illustration

Dimensions



Technical Illustration

Wiring diagram

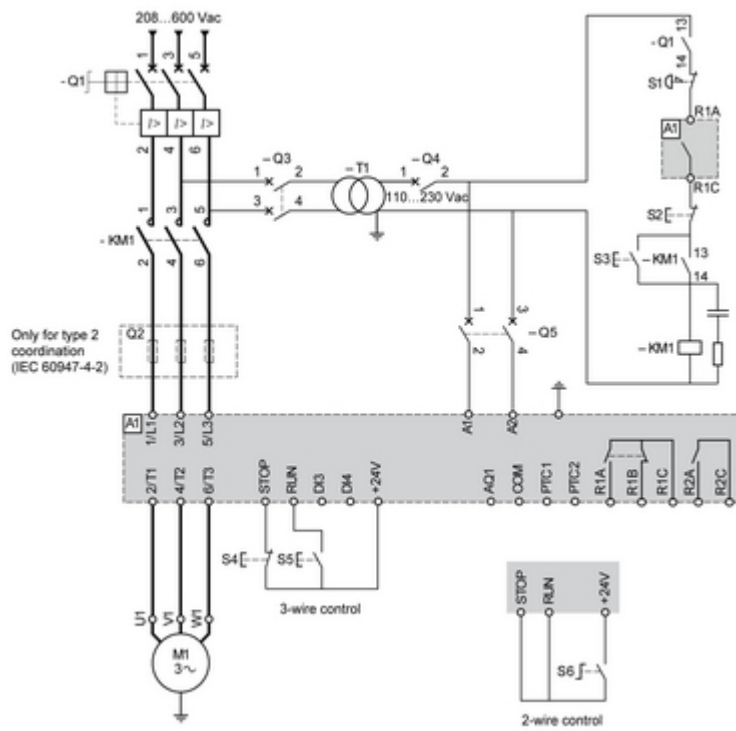


Image of product / Alternate images

Alternative





