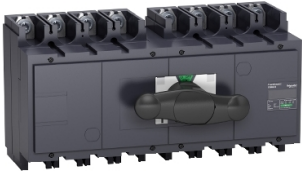


Product datasheet

Specifications



complete manual source
changeover assembly. FXM630.
Compact INS630 switch
disconnectors. 630 A. 4 poles

31155

Price: 24,151.31 ZAR

Main

Range of product	INS320...630
Range	TransferPacT ComPact
Device short name	INS630
Product or component type	Manual transfer switch
Device application	Change source of supply
Range compatibility	ComPact ComPacT INS INS630 switch disconnector
Poles description	4P
Network type	DC AC
Network frequency	50/60 Hz
Mounting mode	Fixed
Upside connection	Front
Downside connection	Front
Suitability for isolation	Yes
Contact position indicator	Yes
[Icm] rated short-circuit making capacity	330 kA with upstream protection circuit breaker 690 V AC at 50/60 Hz 50 kA switch-disconnector alone 690 V AC at 50/60 Hz

Complementary

Transfer switch class	PC
Number of contact position	3
control type	Direct front rotary handle
Operating mode	Manual
Mounting support	Rail Plate
Locking options description	Padlocking in OFF position

Excluding VAT and subject to change. Please check with your local distributor through "Where to buy"

[Ie] rated operational current	AC-22A: 630 A AC 50/60 Hz 220/240 V AC-22A: 630 A AC 50/60 Hz 380/415 V AC-22A: 630 A AC 50/60 Hz 440/480 V AC-22A: 630 A AC 50/60 Hz 500/525 V AC-22A: 630 A AC 50/60 Hz 660/690 V AC-23A: 630 A AC 50/60 Hz 220/240 V AC-23A: 630 A AC 50/60 Hz 380/415 V AC-23A: 630 A AC 50/60 Hz 440/480 V AC-23A: 630 A AC 50/60 Hz 500/525 V AC-23A: 630 A AC 50/60 Hz 660/690 V DC-22A: 550 A DC 125 V 2 poles in series DC-23A: 550 A DC 125 V 2 poles in series DC-23B: 630 A DC 125 V 2 poles in series DC-22A: 550 A DC 250 V 4 poles in series DC-23A: 550 A DC 250 V 4 poles in series DC-23B: 630 A DC 250 V 4 poles in series
---------------------------------------	----------------------------------------------------------------------------------------------------------------------------------------------------------------------------------------------------------------------------------------------------------------------------------------------------------------------------------------------------------------------------------------------------------------------------------------------------------------------------------------------------------------------------------------------------------------------------------------------------------------------------------------------------------------------------

[Ith] conventional free air thermal current	630 A at 60 °C
----------------------------------------------------	----------------

Rated duty	Uninterrupted
-------------------	---------------

Intermittent duty class	Class 120 - 60 %
--------------------------------	------------------

[Ui] rated insulation voltage	750 V AC 50/60 Hz
--------------------------------------	-------------------

[Uimp] rated impulse withstand voltage	8 kV
-----------------------------------------------	------

[Ue] rated operational voltage	690 V AC 50/60 Hz conforming to IEC 60947-3 250 V DC conforming to IEC 60947-3
---------------------------------------	-----------------------------------------------------------------------------------

Mechanical interlocking	With mechanical interlocking
--------------------------------	------------------------------

Mechanical durability	10000 cycles
------------------------------	--------------

Electrical durability	AC-22A: 1500 cycles 440 V AC 50/60 Hz AC-22A: 1500 cycles 500 V AC 50/60 Hz AC-22A: 1500 cycles 690 V AC 50/60 Hz AC-23A: 1500 cycles 440 V AC 50/60 Hz AC-23A: 1500 cycles 500 V AC 50/60 Hz AC-23A: 1500 cycles 690 V AC 50/60 Hz DC-23A: 1000 cycles 250 V DC 4 poles in series DC-23B: 200 cycles 250 V DC 4 poles in series
------------------------------	-------------------------------------------------------------------------------------------------------------------------------------------------------------------------------------------------------------------------------------------------------------------------------------------------------------------------------------------------------

Connection pitch	45 mm
-------------------------	-------

[Icw] rated short-time withstand current	11.5 kA during 3 s conforming to IEC 60947-3 20 kA during 1 s conforming to IEC 60947-3 4 kA during 30 s conforming to IEC 60947-3 4.9 kA during 20 s conforming to IEC 60947-3
-------------------------------------------------	------------------------------------------------------------------------------------------------------------------------------------------------------------------------------------------

Height	205 mm
---------------	--------

Width	395 mm
--------------	--------

Depth	155 mm
--------------	--------

Net weight	13.5 kg
-------------------	---------

Environment

Standards	IEC 60947-3 IEC 60947-1
------------------	----------------------------

Product certifications	CB
-------------------------------	----

Electrical shock protection class	Class II
------------------------------------------	----------

IP degree of protection	IP40 conforming to IEC 60947-3
--------------------------------	--------------------------------

Pollution degree	3
-------------------------	---

Ambient air temperature for operation	-25...70 °C
----------------------------------------------	-------------

Packing Units

Unit Type of Package 1	PCE
-------------------------------	-----

Number of Units in Package 1	1
Package 1 Height	21.200 cm
Package 1 Width	22.000 cm
Package 1 Length	49.400 cm
Package 1 Weight	14.596 kg

Contractual warranty

Warranty (in months)	18
-----------------------------	----



Environmental Data

Schneider Electric aims to achieve Net Zero status by 2050 through supply chain partnerships, lower impact materials, and circularity via our ongoing “Use Better, Use Longer, Use Again” campaign to extend product lifetimes and recyclability.

[Environmental Data explained >](#)

[How we assess product sustainability >](#)



Environmental footprint

[Environmental Disclosure](#)

[Product Environmental Profile](#)

Use Better



Materials and Substances

Packaging made with recycled cardboard

Yes

Packaging without single use plastic

No

[EU RoHS Directive](#)

Compliant with Exemptions

SCIP Number

96c07461-c89d-4d0d-8646-22e0f7ae8dc0

Use Longer



Lifetime extension

Repair

No

Use Again



Repack and remanufacture

End of life manual availability

[End of Life Information](#)

Take-back

No

WEEE Label



The product must be disposed on European Union markets following specific waste collection and never end up in rubbish bins