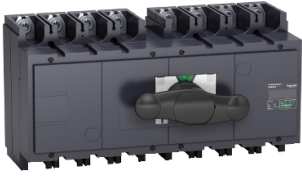


# Product datasheet

Specifications



complete manual source  
changeover assembly, FXM320,  
Compact INS320 switch  
disconnectors, 320 A, 4 poles

31149

**Price: 31,875.37 ZAR**

## Main

Range of product	INS320...630
Range	TransferPacT ComPact
Device short name	INS320
Product or component type	Manual transfer switch
Device application	Change source of supply
Range compatibility	ComPact ComPacT INS INS320 switch disconnector
Poles description	4P
Network type	AC DC
Network frequency	50/60 Hz
Mounting mode	Fixed
Upside connection	Front
Downside connection	Front
Suitability for isolation	Yes
Contact position indicator	Yes
[Icm] rated short-circuit making capacity	330 kA with upstream protection circuit breaker 690 V AC at 50/60 Hz 50 kA switch-disconnector alone 690 V AC at 50/60 Hz

## Complementary

Transfer switch class	PC
Number of contact position	3
control type	Direct front rotary handle
Operating mode	Manual
Mounting support	Plate Rail
Locking options description	Padlocking in OFF position

Excluding VAT and subject to change. Please check with your local distributor through "Where to buy"

<b>[Ie] rated operational current</b>	AC-22A: 320 A AC 50/60 Hz 220/240 V AC-22A: 320 A AC 50/60 Hz 380/415 V AC-22A: 320 A AC 50/60 Hz 440/480 V AC-22A: 320 A AC 50/60 Hz 500/525 V AC-22A: 320 A AC 50/60 Hz 660/690 V AC-23A: 320 A AC 50/60 Hz 220/240 V AC-23A: 320 A AC 50/60 Hz 380/415 V AC-23A: 320 A AC 50/60 Hz 440/480 V AC-23A: 320 A AC 50/60 Hz 500/525 V AC-23A: 320 A AC 50/60 Hz 660/690 V DC-22A: 320 A DC 125 V 2 poles in series DC-23A: 320 A DC 125 V 2 poles in series DC-22A: 320 A DC 250 V 4 poles in series DC-23A: 320 A DC 250 V 4 poles in series
<b>[Ith] conventional free air thermal current</b>	320 A at 60 °C
<b>Rated duty</b>	Uninterrupted
<b>Intermittent duty class</b>	Class 120 - 60 %
<b>[Ui] rated insulation voltage</b>	750 V AC 50/60 Hz
<b>[Uimp] rated impulse withstand voltage</b>	8 kV
<b>[Ue] rated operational voltage</b>	690 V AC 50/60 Hz conforming to IEC 60947-3 250 V DC conforming to IEC 60947-3
<b>Mechanical interlocking</b>	With mechanical interlocking
<b>Mechanical durability</b>	10000 cycles
<b>Electrical durability</b>	AC-22A: 1500 cycles 440 V AC 50/60 Hz AC-22A: 1500 cycles 500 V AC 50/60 Hz AC-22A: 1500 cycles 690 V AC 50/60 Hz AC-23A: 1500 cycles 440 V AC 50/60 Hz AC-23A: 1500 cycles 500 V AC 50/60 Hz AC-23A: 1500 cycles 690 V AC 50/60 Hz DC-23A: 1000 cycles 250 V DC 4 poles in series
<b>Connection pitch</b>	45 mm
<b>[Icw] rated short-time withstand current</b>	11.5 kA during 3 s conforming to IEC 60947-3 20 kA during 1 s conforming to IEC 60947-3 4 kA during 30 s conforming to IEC 60947-3 4.9 kA during 20 s conforming to IEC 60947-3
<b>Height</b>	205 mm
<b>Width</b>	395 mm
<b>Depth</b>	155 mm
<b>Net weight</b>	13.5 kg

## Environment

<b>Standards</b>	IEC 60947-3 IEC 60947-1
<b>Product certifications</b>	CB
<b>Electrical shock protection class</b>	Class II
<b>IP degree of protection</b>	IP40 conforming to IEC 60947-3
<b>Pollution degree</b>	3
<b>Ambient air temperature for operation</b>	-25...70 °C

## Packing Units

<b>Unit Type of Package 1</b>	PCE
<b>Number of Units in Package 1</b>	1
<b>Package 1 Height</b>	22.000 cm

---

Package 1 Width	23.000 cm
Package 1 Length	50.300 cm
Package 1 Weight	14.588 kg

---

## Contractual warranty

---

Warranty (in months)	18
----------------------	----



## Environmental Data

Schneider Electric aims to achieve Net Zero status by 2050 through supply chain partnerships, lower impact materials, and circularity via our ongoing “Use Better, Use Longer, Use Again” campaign to extend product lifetimes and recyclability.

[Environmental Data explained >](#)

[How we assess product sustainability >](#)



### Environmental footprint

[Environmental Disclosure](#)

[Product Environmental Profile](#)

## Use Better



### Materials and Substances

Packaging made with recycled cardboard

Yes

Packaging without single use plastic

No

[EU RoHS Directive](#)

Compliant with Exemptions

SCIP Number

96c07461-c89d-4d0d-8646-22e0f7ae8dc0

## Use Longer



### Lifetime extension

Repair

No

## Use Again



### Repack and remanufacture

End of life manual availability

[End of Life Information](#)

Take-back

No

WEEE Label



The product must be disposed on European Union markets following specific waste collection and never end up in rubbish bins