

Product datasheet

Specifications



TransferPacT Active Automatic, 500A, 400V, 4P, LCD, frame 630A

TA63D4L5004TPE

⚠ Discontinued on: 01 Dec 2024

Price: 65,567.31 ZAR

⚠ To be discontinued

Main

| | |
|---|--|
| Range of product | TransferPacT |
| Product or component type | Automatic transfer switch |
| Device application | Change source of supply |
| Poles description | 4P |
| Network type | AC |
| Network frequency | 50/60 Hz |
| Downside connection | Screwed |
| Mounting mode | Fixed |
| Upside connection | Screwed |
| Contact position indicator | Yes |
| [Icm] rated short-circuit making capacity | 40 kA switch-disconnector alone 400 V AC at 50 Hz 330 kA with upstream protection circuit breaker 400 V AC at 50 Hz |
| Suitability for isolation | Yes |

Complementary

| | |
|--|---|
| Transfer switch class | PC |
| Number of contact position | 3 |
| Signal contacts composition | 1 NO + 2 NC 1 NC + 2 NO 2 NO |
| Utilization category | AC-33B |
| [Ue] rated operational voltage | 400 V AC 50/60 Hz |
| control type | 4 push-buttons |
| Operating mode | Manual Automatic |
| Display type | LCD screen |
| Mounting support | Plate |
| Locking options description | Padlock in OFF position Padlock in SI / SII position |
| Rated duty | Uninterrupted |
| [Ui] rated insulation voltage | Switch: 800 V Controller: 500 V |
| [Uimp] rated impulse withstand voltage | Switch: 12 kV Controller: 6 kV |

Excluding VAT and subject to change. Please check with your local distributor through "Where to buy"

| | |
|--|---|
| [Ie] rated operational current | 500 A |
| Mechanical interlocking | With mechanical interlocking |
| Mechanical durability | 10000 cycles |
| Connection pitch | 45 mm |
| Local signalling | LED indicator (green) for power ON LED indicator (red) for alarm |
| [Icw] rated short-time withstand current | 20 kA during 0.5 s 25 kA during 0.1 s |
| Height | 341 mm |
| Width | 467 mm |
| Depth | 185.8 mm |
| Net weight | 22.8 kg |
| [Ith] conventional free air thermal current | 500 A at 60 °C |

Environment

| | |
|--|--|
| Standards | IEC 60947-6-1 |
| Product certifications | CE CB CCC |
| IP degree of protection | Front face: IP40 auto mode Inside the enclosure: IP20 manual mode |
| Ambient air temperature for operation | -25...70 °C |
| Ambient air temperature for storage | -40...85 °C |
| Pollution degree | 3 |

Packing Units

| | |
|-------------------------------------|-----------|
| Unit Type of Package 1 | PCE |
| Number of Units in Package 1 | 1 |
| Package 1 Height | 73.000 cm |
| Package 1 Width | 60.000 cm |
| Package 1 Length | 80.000 cm |
| Package 1 Weight | 36.500 kg |

Contractual warranty

| | |
|-----------------------------|----|
| Warranty (in months) | 18 |
|-----------------------------|----|



Environmental Data

Schneider Electric aims to achieve Net Zero status by 2050 through supply chain partnerships, lower impact materials, and circularity via our ongoing “Use Better, Use Longer, Use Again” campaign to extend product lifetimes and recyclability.

[Environmental Data explained >](#)

[How we assess product sustainability >](#)



Environmental footprint

Total lifecycle Carbon footprint 3093

Environmental Disclosure [Product Environmental Profile](#)

Use Better



Materials and Substances

Packaging made with recycled cardboard Yes

Packaging without single use plastic No

[EU RoHS Directive](#) Compliant with Exemptions

SCIP Number C3983c66-b0d8-4e89-97bd-6283c5c8cdd7

REACH Regulation [REACH Declaration](#)

Use Longer



Lifetime extension

Repair No

Use Again



Repack and remanufacture

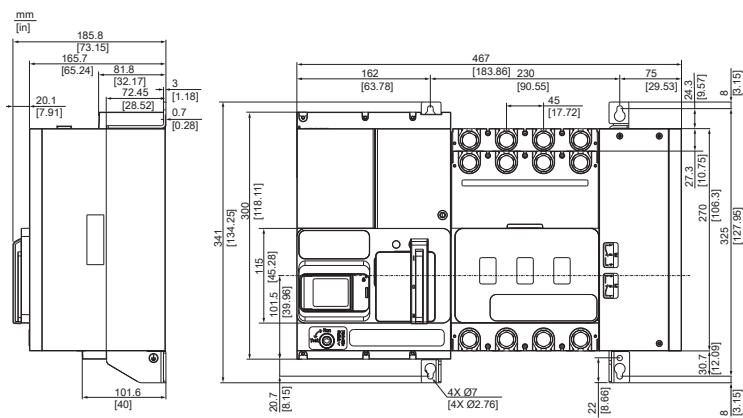
End of life manual availability [End of Life Information](#)

Take-back No

WEEE Label  The product must be disposed on European Union markets following specific waste collection and never end up in rubbish bins

Technical Illustration

Dimensions



Technical Illustration

Assembly exploded view

